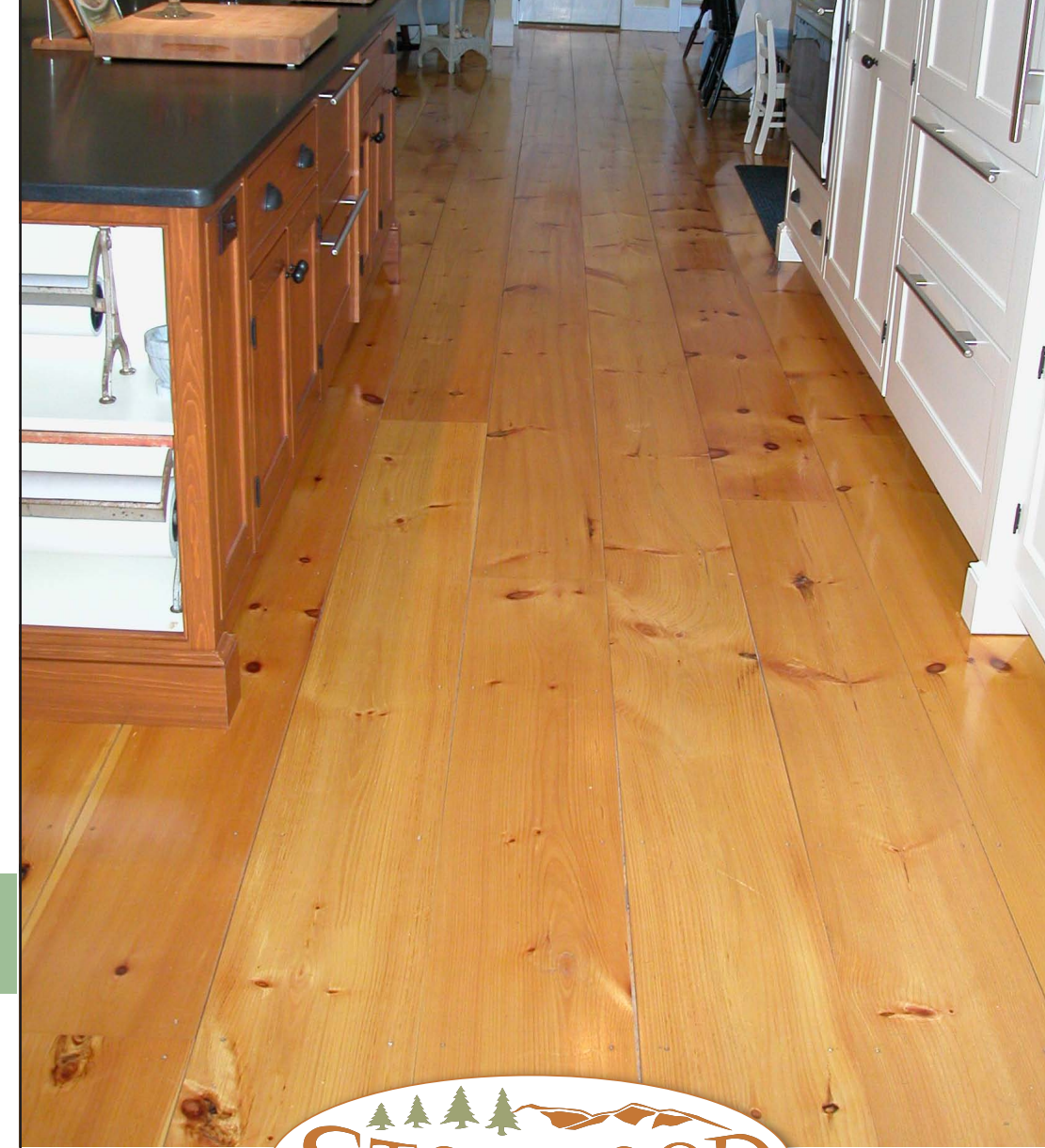




Stonewood Products has it all..
**CUSTOM MILLING &
PLANK AVAILABLE**



pumpkin pine
heart pine

southern yellow pine



We have a huge inventory of pine beams as well!



FLOORING SAMPLES
available on request.
For further information on
installation and antique heart pine,
please contact a sales specialist.
Mashpee 508.477.9950
Harwich 508.430.5020



PINE FLOORING

Eastern White
Pumpkin
Southern Yellow
Longleaf Heart
Reclaimed Antique Heart





FROM THE MILL TO YOU

Stonewood Products has one of the biggest selections of pine flooring on the east coast. For over a decade, we have been growing our sources from all over the world and do it at the best prices with unparalleled selection.



SELECTION

Whether it's a restoration that needs that colonial look with wide pine, rooms that have high traffic and call for a harder pine, to a green design or home with reclaimed antique heart pine as the finishing exclamation point of beauty, we have it all.

CUSTOM OPTIONS

FINISHING TOUCHES.

Need custom milled boards? Custom plank? We do that too. Ask about our many options.

For finishes, Stonewood Products, offers a wide range of finishing stains to suit your budget and taste. Many builders and architects use our Tung Oil as a finish.

Tung Oil, which comes from the Tung tree, brings out the natural color of pine flooring, and having been used since the 14th century to protect wooden ships, is an excellent choice to finish your wood flooring.



For the antique, colonial look, Stonewood offers Tremont Antique nails in various styles as well.

PRICE. SELECTION. FINISH.

Stonewood Products is the one stop authority source for all of your pine flooring needs.

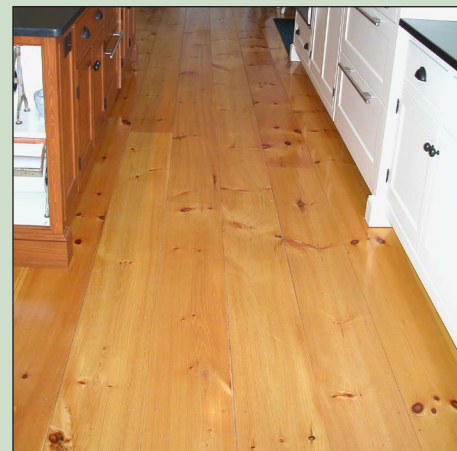


offered to 20" widths+

eastern white pine

Eastern White Pine is the most popular species for wide pine flooring. It comes in many grades from standard that shows more knots to premium grade, with few to no knots. Easy to install and well known as a foundation for rustic appeal.

Widths are offered to 20" and more.



Boards are square-edged, tongue and groove, or shiplap : prices start from \$1 per square foot.



antique heart pine -reclaimed

Antique Heart Pine is one of the most unique lumber species, renowned for its strength and character that took centuries to create.

Antique Heart Pine was used extensively hundreds of years ago in factories and warehouses built during the Industrial Revolution and was once the most functional wood for construction in America.

A slow-growing tree, taking 200 to 400 years to mature, it has a patina color and sought after tight rings which stem from its 'old growth' and lends the strength to this unique wood.



Antique Heart Pine is also an eco-conscious choice as a reclaimed product that contributes to sustainable building.